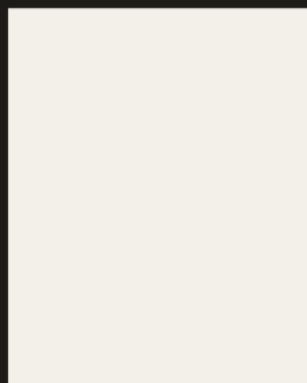


# PLAIN COLOR

## SOLID COLOR



101 SF | MF POLAR WHITE



102 SF | MF EGG WHITE



107 SF | SILVER GREY



106 SF | MF STEEL GREY



108 SF | MF PEBBLE GREY



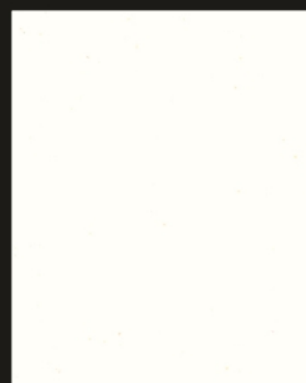
110 SF | MF SOFT BLACK

## HIGH GLOSS COLOR

A collection with beautiful textures and colors invite you to bask in its supreme beauty.

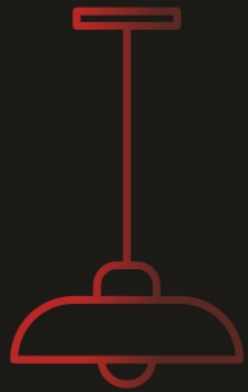


101 HG | POLAR WHITE



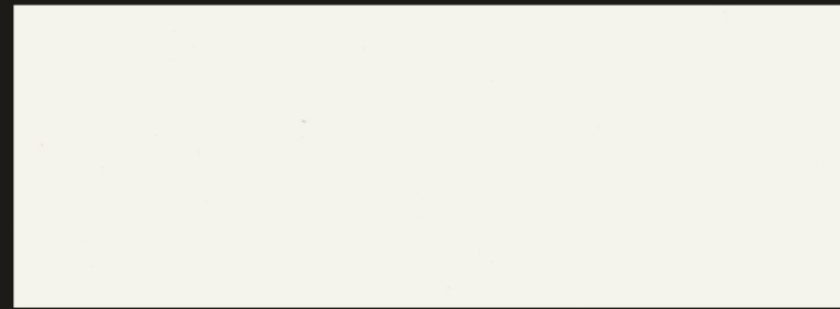
102 HG | ARCTIC WHITE

# PASTEL SOLIDS

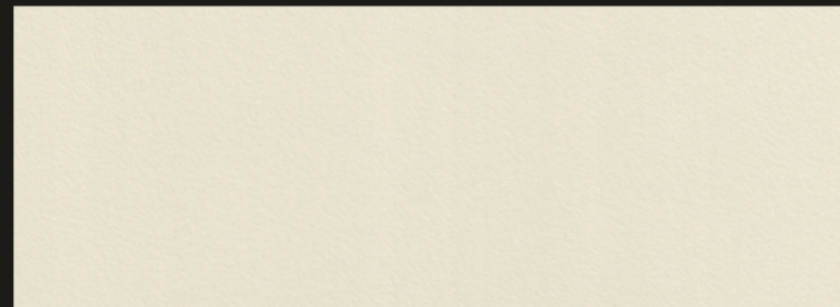


## PREMIUM COLLECTION

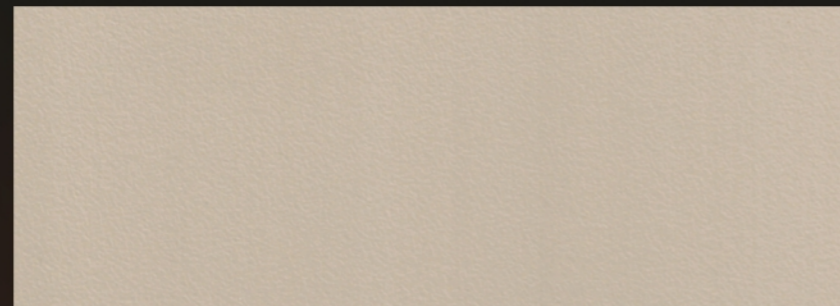
We are spoiling you from choice with a spectrum of colors on offer, to create your dream ambiance with the utmost ease.



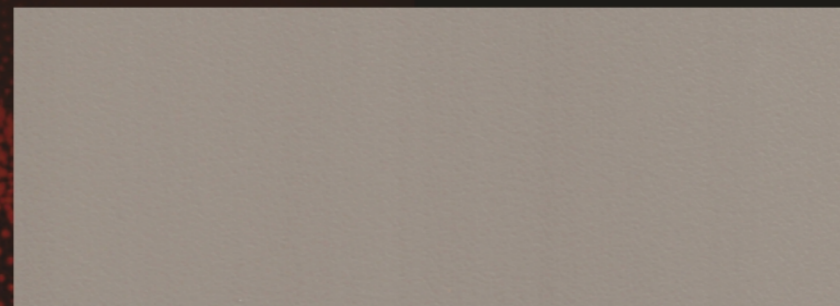
111 SF | MF ★



112 SF | MF ★



113 SF | MF ★



114 SF | MF ★

# METALLIC RANGE



241 SF | MF



242 SF | MF



246 SF | MF

## A LUXURIOUS LOOK FOR A LOT LESS

"Creativity sure does have a place, and can help make living spaces beautiful, charming and elegantly furnished. Liz Marie uses bright colors to invite more light and create a roomy yet very cozy feel despite limited space. The trick applied here centers on the use of a single color scheme"



247 SF | MF

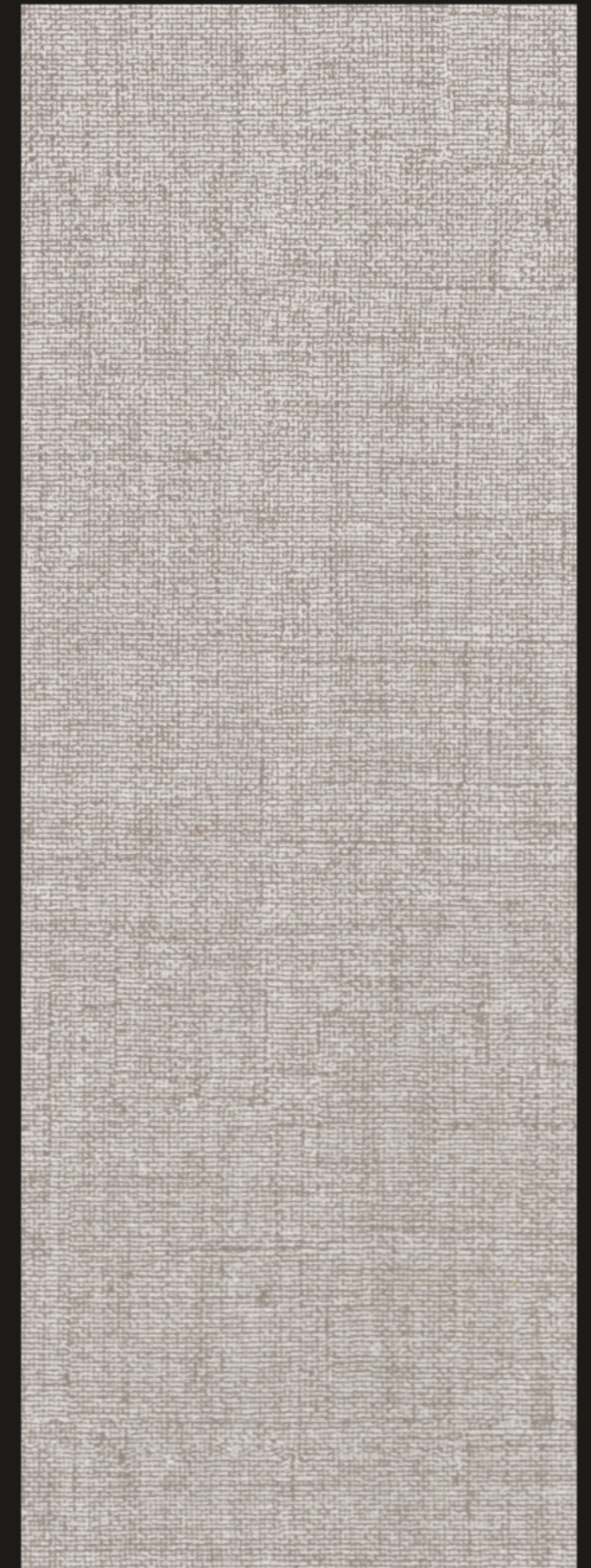
# FABRIC



201 SF | MF



202 SF | MF



205 SF | MF

A simple yet appealing design that creates a sleek look to your interiors adding versatility to ambiance.

# FABRIC



207 SF | MF



208 SF | MF



## THE BEAUTY IS IN MINIMAL DETAILING

Everything in life follow patterns and everything in nature has its own design. it creates harmony in the world. the right selection of perfect design and pattern complementing and accentuating the beauty of your decor is one of the most crucial process that harmonizes the entire look of the space. enchanting sights that delight.. when your spaces have the synchronized play of shades and style it illuminates the whole ambiance.

*Fabulous*



# FABRIC



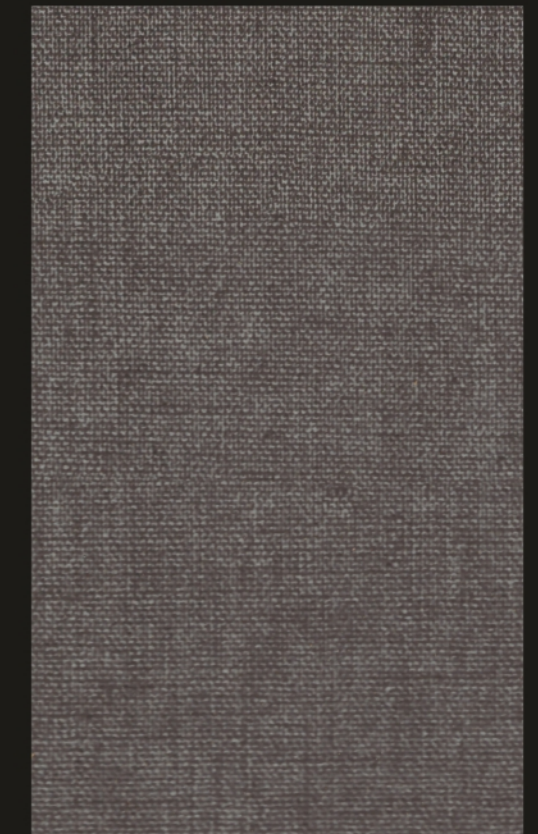
204 SF | MF



204 SF  
USED LAMINATE



223 SF | MF



224 SF | MF

## FELL THE ELEGANCE COME ALIVE

Everything looks beautiful on paper and plan. But it is the magic of sheer craftsmanship and painstaking perfection that transform the vision in to beautiful reality. Only a true craftsman can make ambience alive even with a piece of furniture.



15: 2045 995  
CM/1-4300075609



## REFLECT PERSONALITY & SENSE OF AESTHETICS

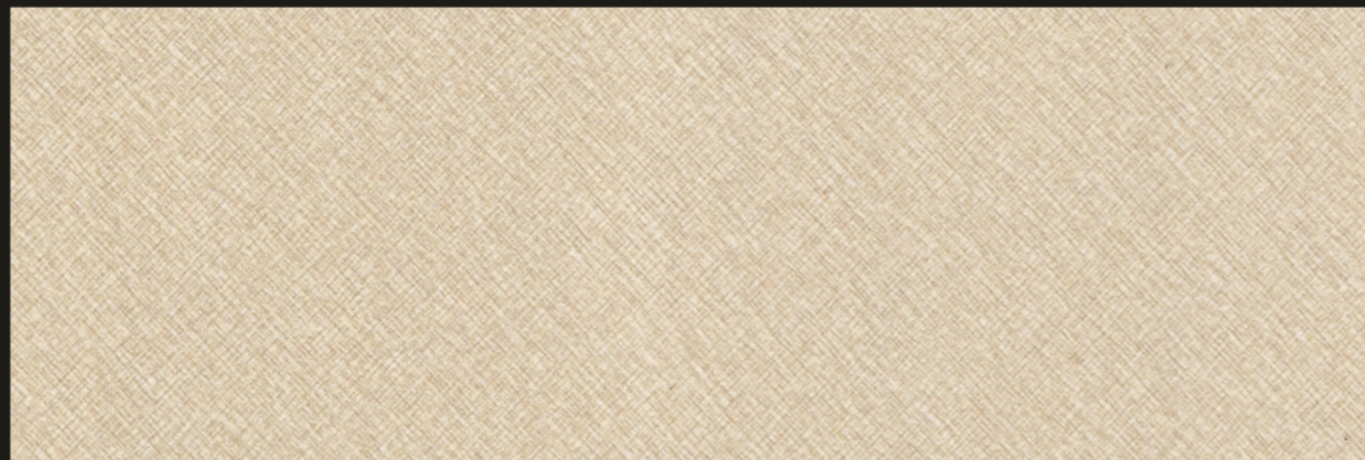
One of the most accurate home decor quotes, I must say! Ideally, rooms should be cohesive, giving a sense of connection, rather than appearing as a hodgepodge of random items tossed together. The colors should complement each other. The decor items and artwork should be selected with intention. Pieces should fit together like a puzzle, and the room should be envisioned and approached as a whole.



244 SF | MF



250 SF | MF



245 SF | MF



251 SF | MF

# FABRIC



A stroke of nature to give an ambiance the naturally beautiful identity and persona.



209 SF | MF



209 SF  
USED LAMINATE



210 SF | MF



# FABRIC

## A FINE DISPLAY TOUCH TIMELESS FONDLING

"The style of this Scandinavian house is a combination of a right amount of color and light. It converges shape with functionality and mixes new and old with a slight twist of irony. The stereotype that is often placed upon a Scandinavian home is that it is stark and modern"



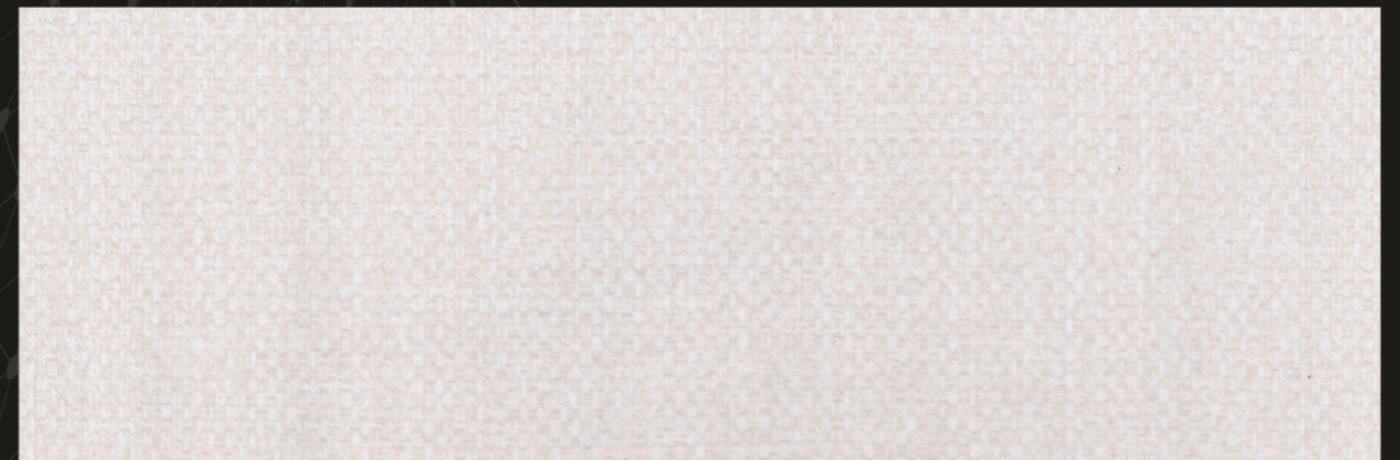
229 SF | MF



225 SF | MF



231 SF | MF



226 SF | MF

# WOODEN

Sophisticated patterns that invoke a sense of elegance and subtle charm.



1073 SF | MF

PLANKED WALNUT

*Imperial*



1070 SF | MF

M. AGACIA



1081 SF | MF

AM. WALNUT

# WOODEN

A stroke of nature to give an ambiance the naturally beautiful identity and persona.



1071 SF | MF

CLASSIC OAK



1072 SF | MF

SILVER OAK



# WOODEN

The glamorous and sturdy textures crafted to make a rich statement about your class.



1020 SF | MF

LINEAR MAPPLE

*Wondrous*



# WOODEN

Light up decor with infinitely stylish surfaces.



1099 SF | MF

URBAN TEAK

1087 SF | MF

CLASSIC ROLEX

1098 SF | MF

GOLDEN TINTRIX

*Ultimate*



CN/L-4300075609

# WOODEN

Refined and radiant patterns that create serene and placid environment



1041 SF | MF

WENGE



1047 SF | MF

BAVARIAN BEECH



1082 SF | MF

SAPELLI



1018 SF | MF

D. CHEST NUT



1053 SF | MF

HIGHLAND PINE



1080 SF | MF

NAINA TEAK



1083 SF | MF

MAHAGONY



1019 SF | MF

L. CHEST NUT

*Incredible*



# CONCRETE



1061 SF



1062 SF

## TECHNICAL SPECIFICATIONS

Size: 1220mm x 2440mm

Finishes: Suede, Matt, Glossy & Variable Texture.

Back Side Finish: Uniform Sanding gives guarantee for easy pasting.

Durability: The best technology provides high durability to our Laminates. Our Laminates are mended for life time.

Flexibility: A Specialty formulated phenol formaldehyde and melamine for formaldehyde resins with a special kind of plasticizer is used for better flexibility.

Note: Sample pasted here in represent only colour and finish, may not actual thickness. Please keep laminates away from direct sunlight.

Bonding of Laminate under high humidity, plywood with high moisture content, ply with uneven surface, inferior quality adhesive and insufficient pressure may lead to delamination / air bubbles in between ply and laminates.

The product must be inspected prior to installation and our liability will be limited to the extent of the cost of the product only.

Care & Maintenance: Wipe clean with ordinary soap or household liquid detergent. For stubborn stains, use diluted organic solvent or stain remover. Abrasive cleaners and wire brushes are not recommended.

Properties	Specified Values as per IS: 2046-1993 type S, VGS	Confirms
Resistance to surface wear	350 (Revolution)	>350 (Revolution)
Resistance to immersion in boiling water	10.0% (maximum) 11.8% (Maximum)	5.0% Max. 6.5% Max.
- Mass increase (%) - Thickness increase (%) - Appearance	Not worse than 4	
Resistance to dry heat 180° C	Not worse than 4	
Dimensional Stability at deviated temperature	0.55% (Maximum) 1.025% (Maximum)	0.5% Max. 0.87% Max.
- Longitudinal (%) - Transverse (%)		
Dimensional Stability at 20° C	0.375% (Maximum) 0.60% (Maximum)	0.295% Max. 0.45% Max.
- Longitudinal (%) - Transverse (%)		
Resistance to impact by small diameter ball	20 N (Minimum)	25 N (Minimum)
Resistance to cracking	Not worse than 4	
Resistance to scratching	2.0 N (Minimum)	2.75 N (Minimum)
Resistance to staining	Not worse than 5	
Resistance to color change (Wool Standard)	Not worse than 5 Not worse than 5	
- In xenon arc light - In enclosed carbon arc light		
Resistance to cigarette burns	Not worse than 3	