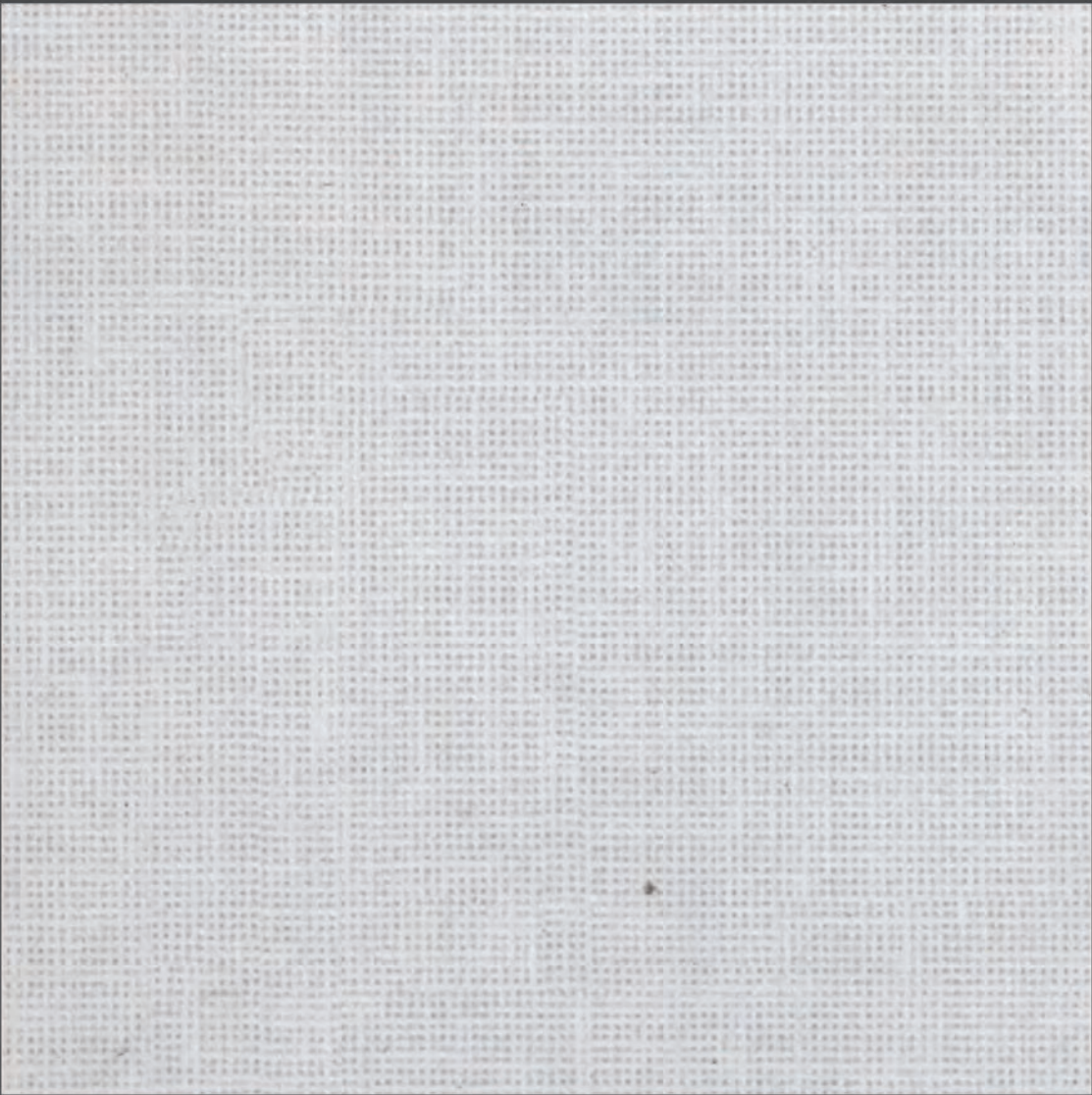
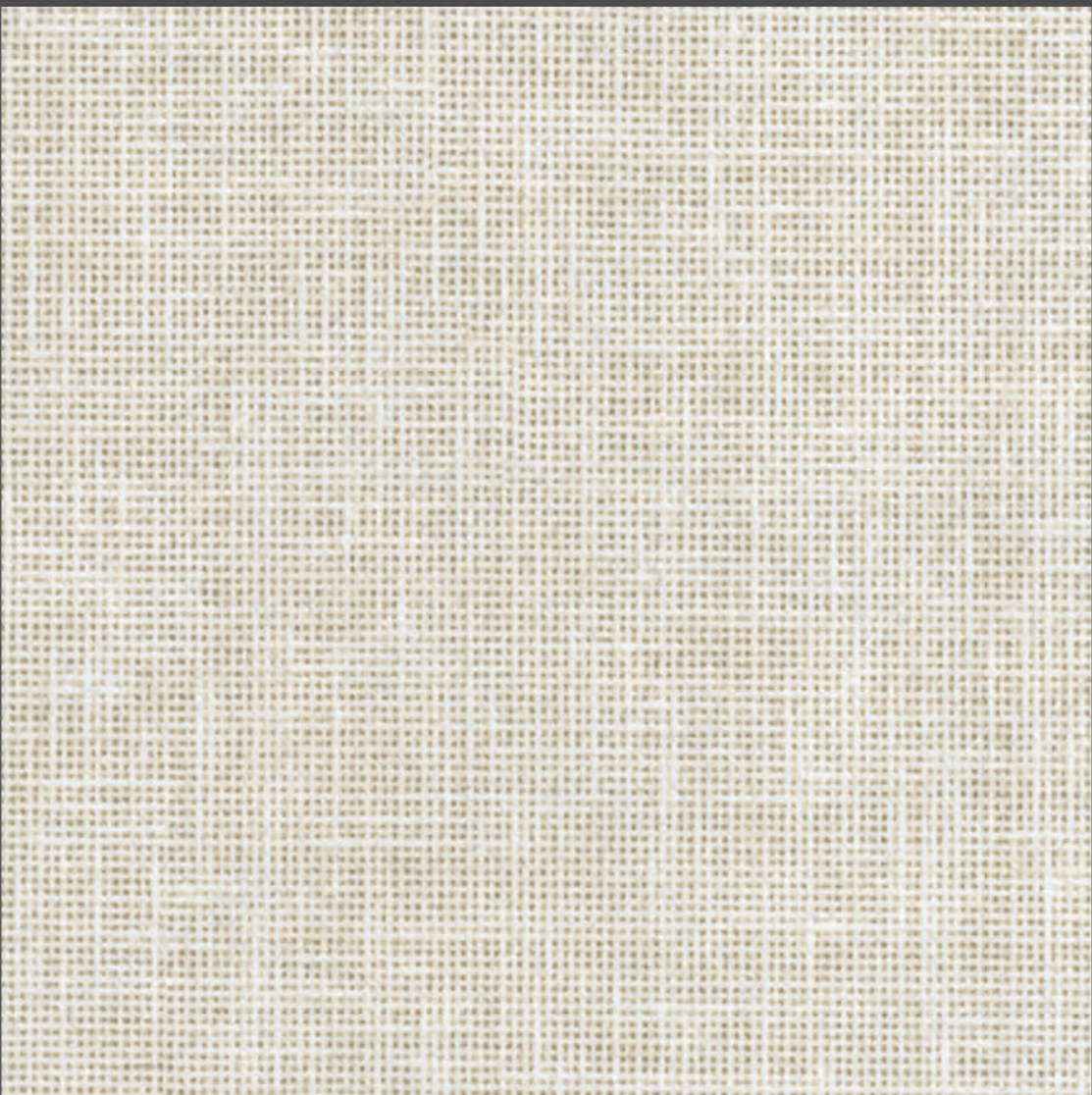


FABRIC

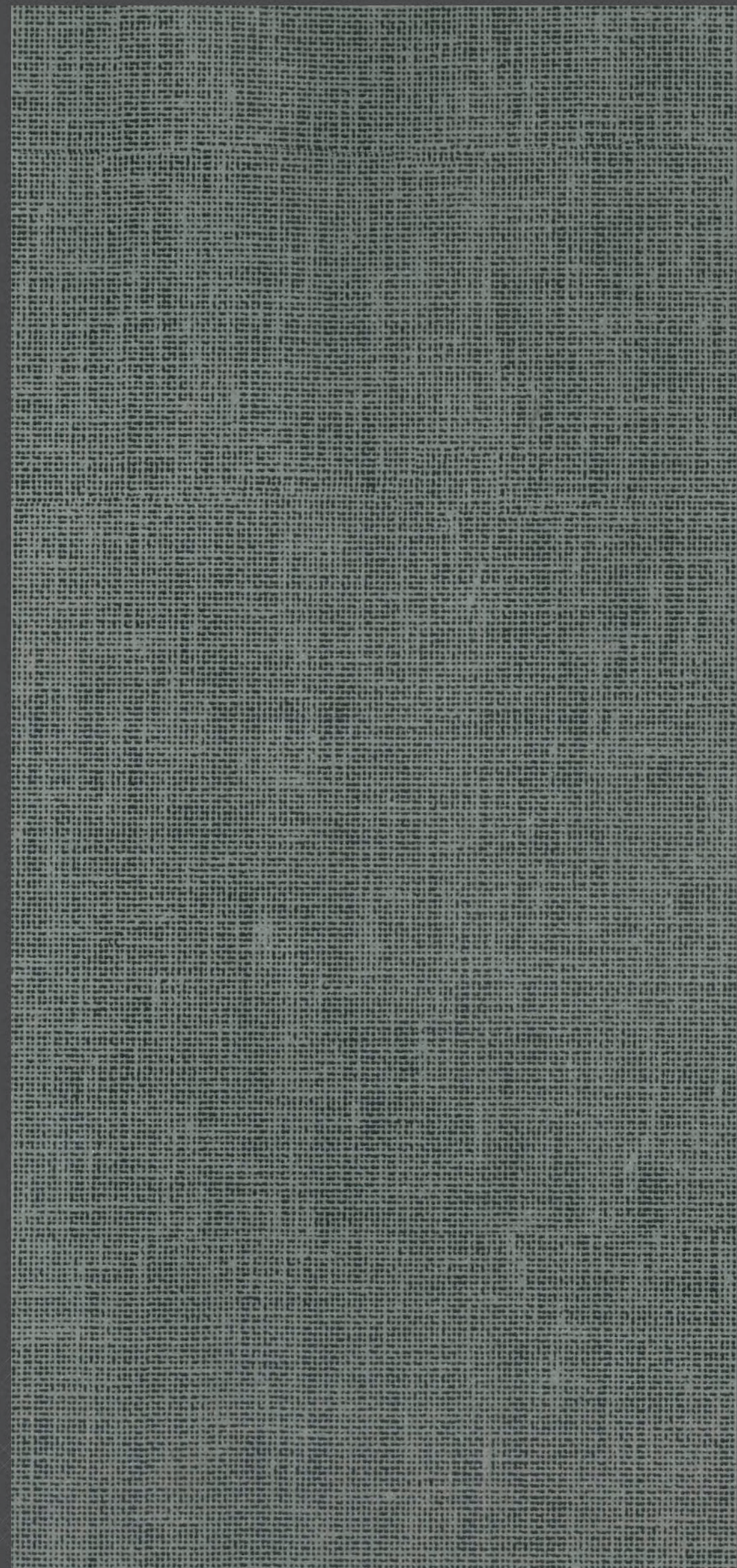


2501-SF



2502-SF

*write over
scintillating style*



2208-SF



HOME



OFFICE



MALLS



100%
PHENOLIC

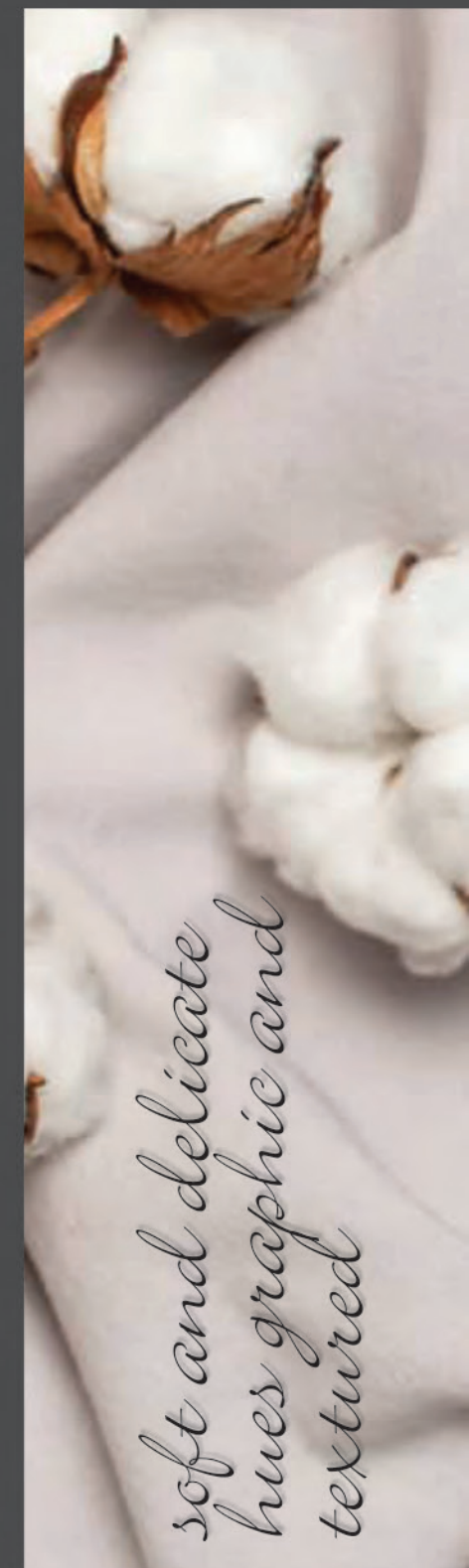
Choose designs that transform your spaces to luxuriance
and stunning appearance with a trending touch.

*Bring out
the fabric.*

FABRIC



The rich ethos of enhancing entice that is sure to impress and express a fabulous form.



*soft and delicate
hues graphic and
textured*

A sneak peek into a world of patterns that create a quirky phenomenon of exceptional innovations.

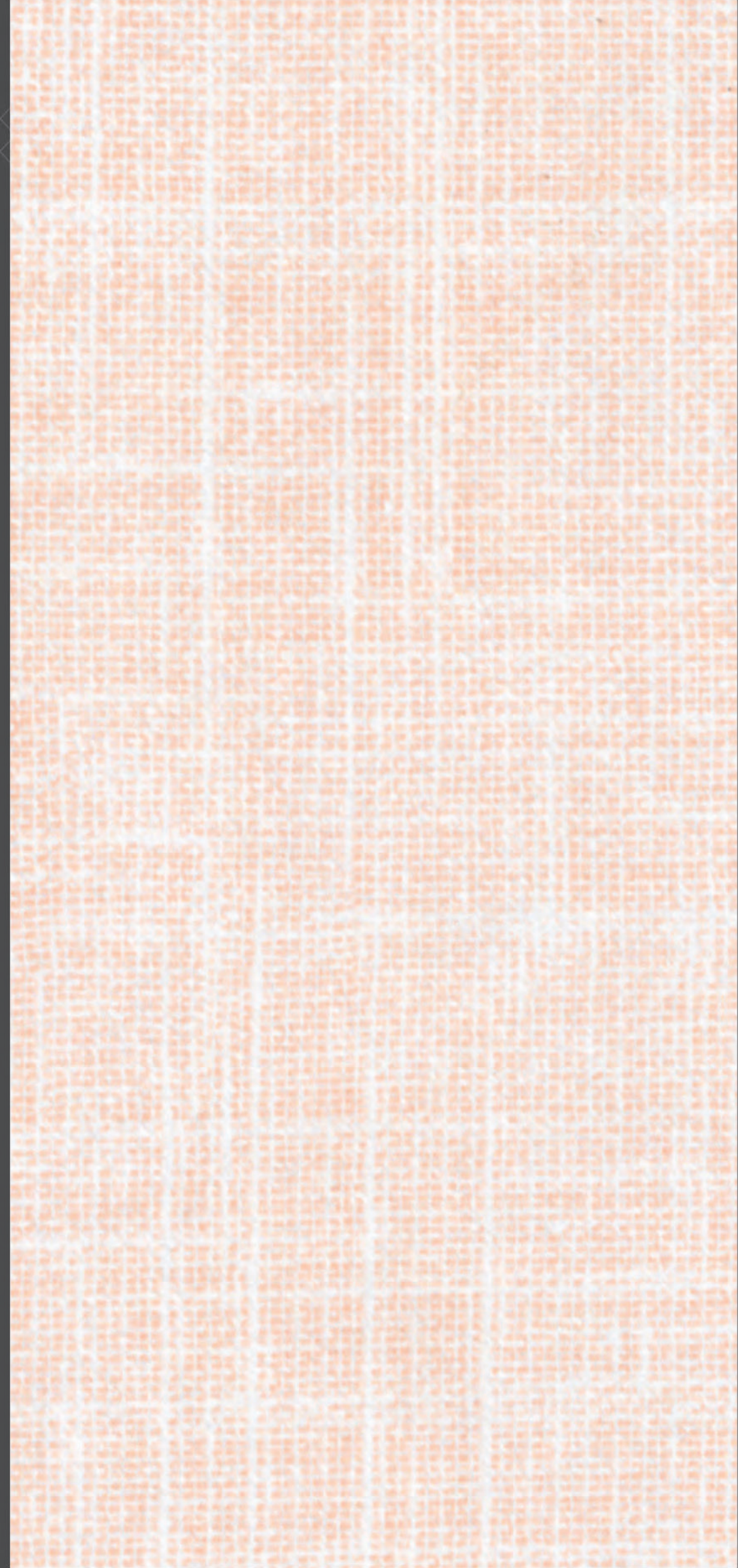
2506-SF

2507-SF

FABRIC



The latest collection of laminates that is created keeping in mind the edge of excellence and exuberance.



A sneak peek into a world of patterns that create a quirky phenomenon of exceptional innovations.



*fabric that will add
charm to your space*

FABRIC



2110-SF



2111-SF



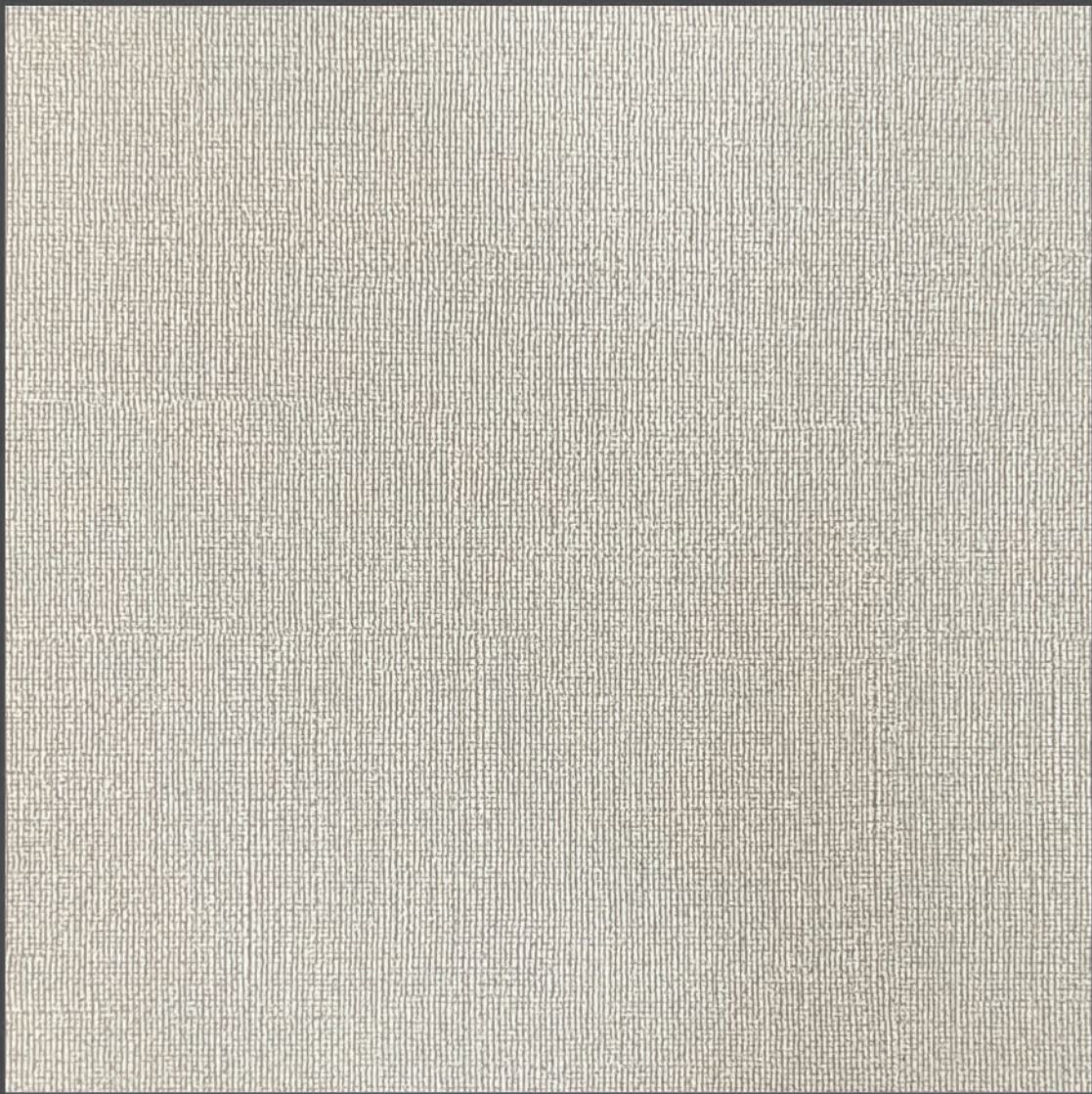
Here's a range that has the charm and captivating edge with ultimate surfaces.



2112-SF



FABRIC



2131-SF

*Let the art come out
of your fabric laminate*

Dress up your spaces, with designs inspired by the vivacious and vibrant clothing. A perfect choice for an ambiance that needs liveliness all the time.

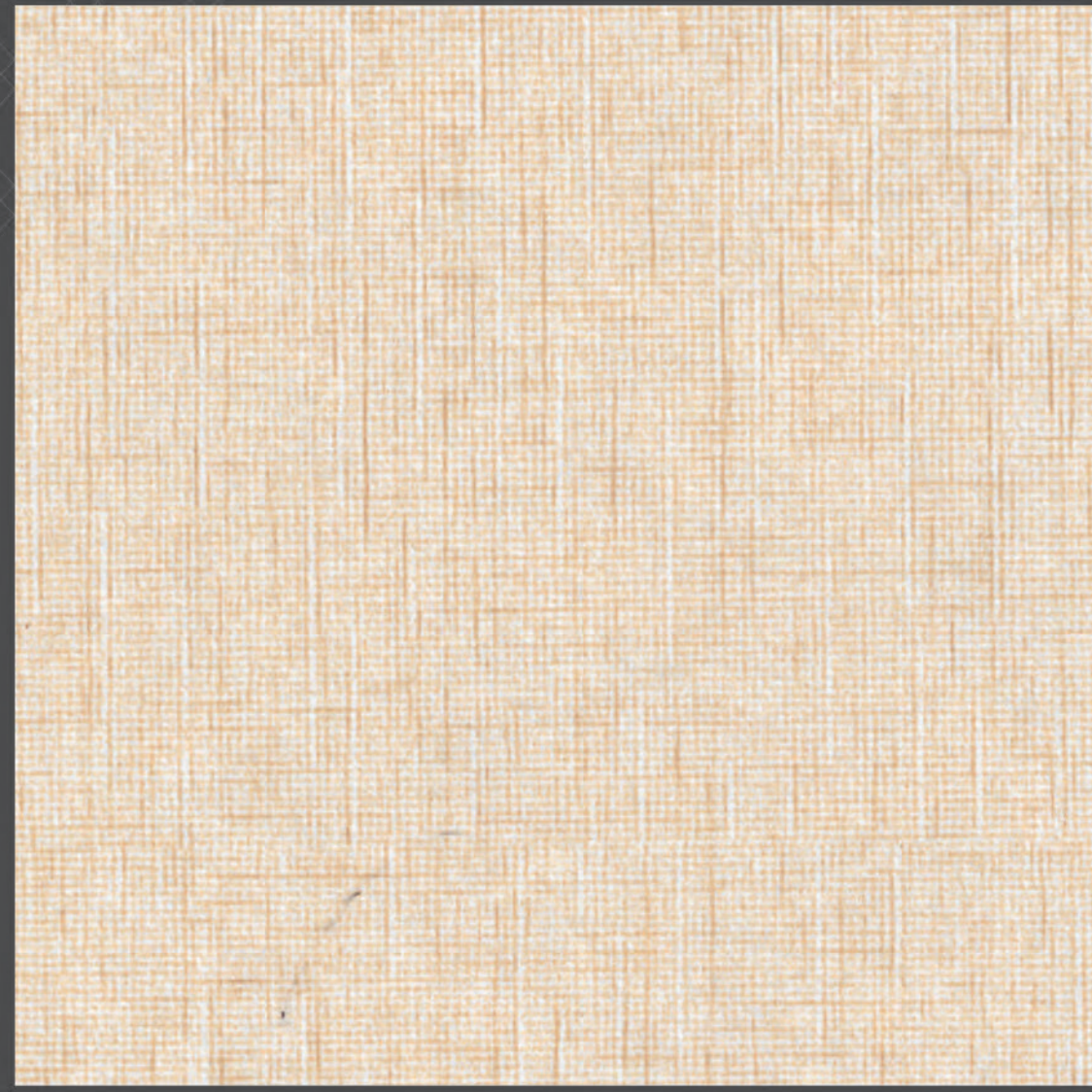


2133-SF

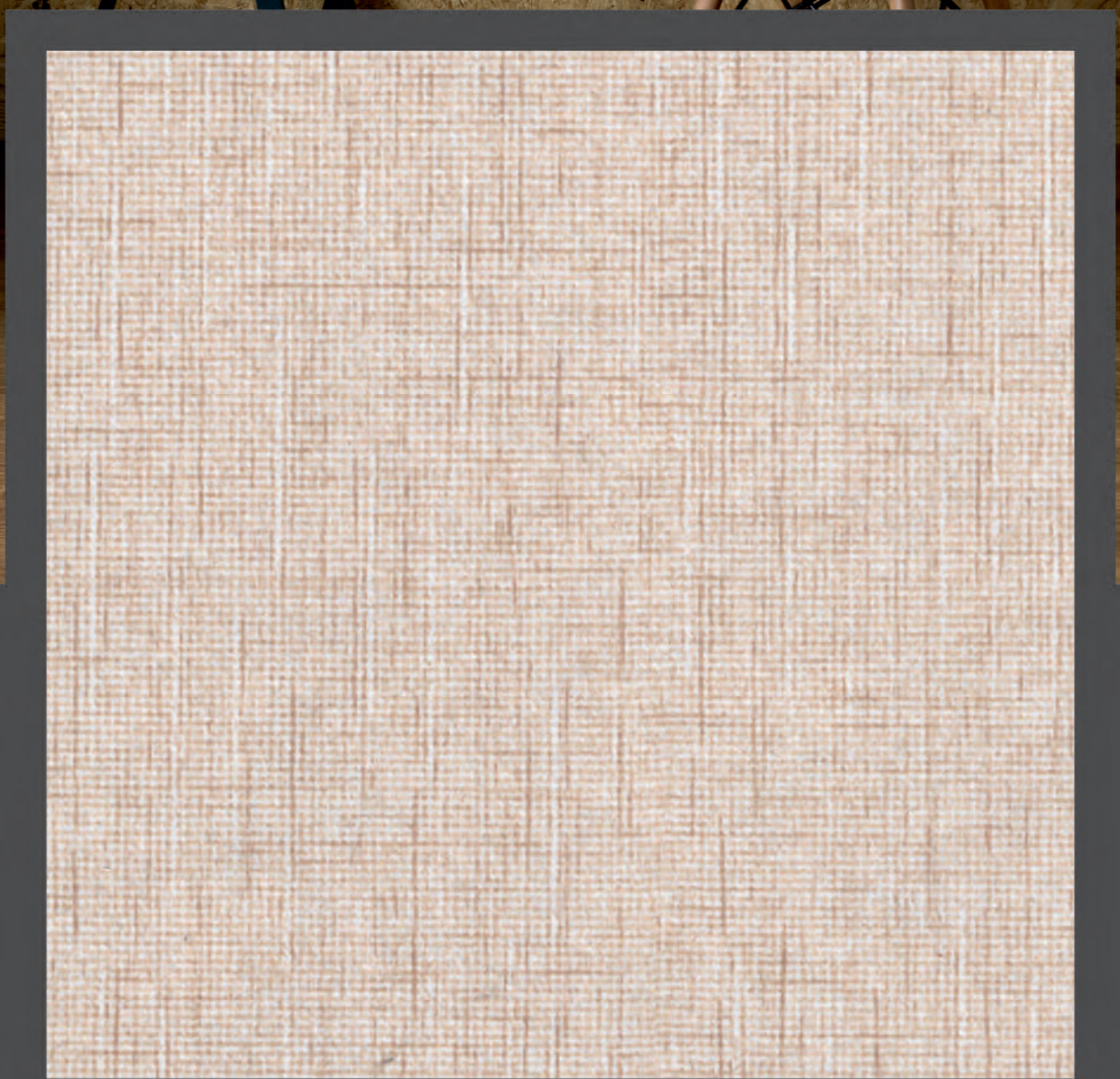
FABRIC



Surfaces that present swanky appearance,
choose laminates that create a spellbound
impact



2102-SF



2101-SF



2103-SF

FABRIC

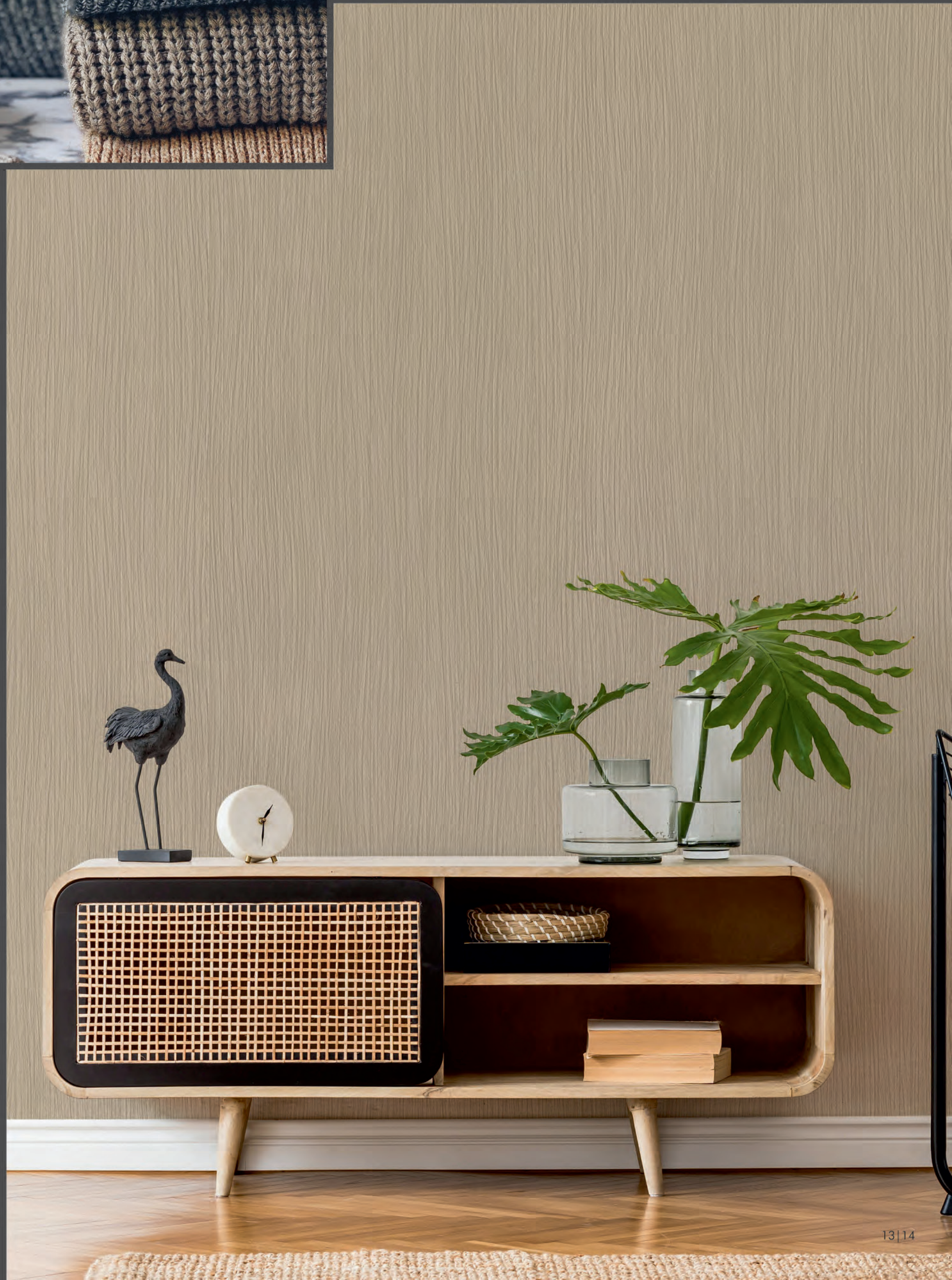


2201-SF



2204-SF

Choose designs that transform your spaces to luxuriance and stunning appearance with a trending touch.



FABRIC



2404-SF



2411-SF

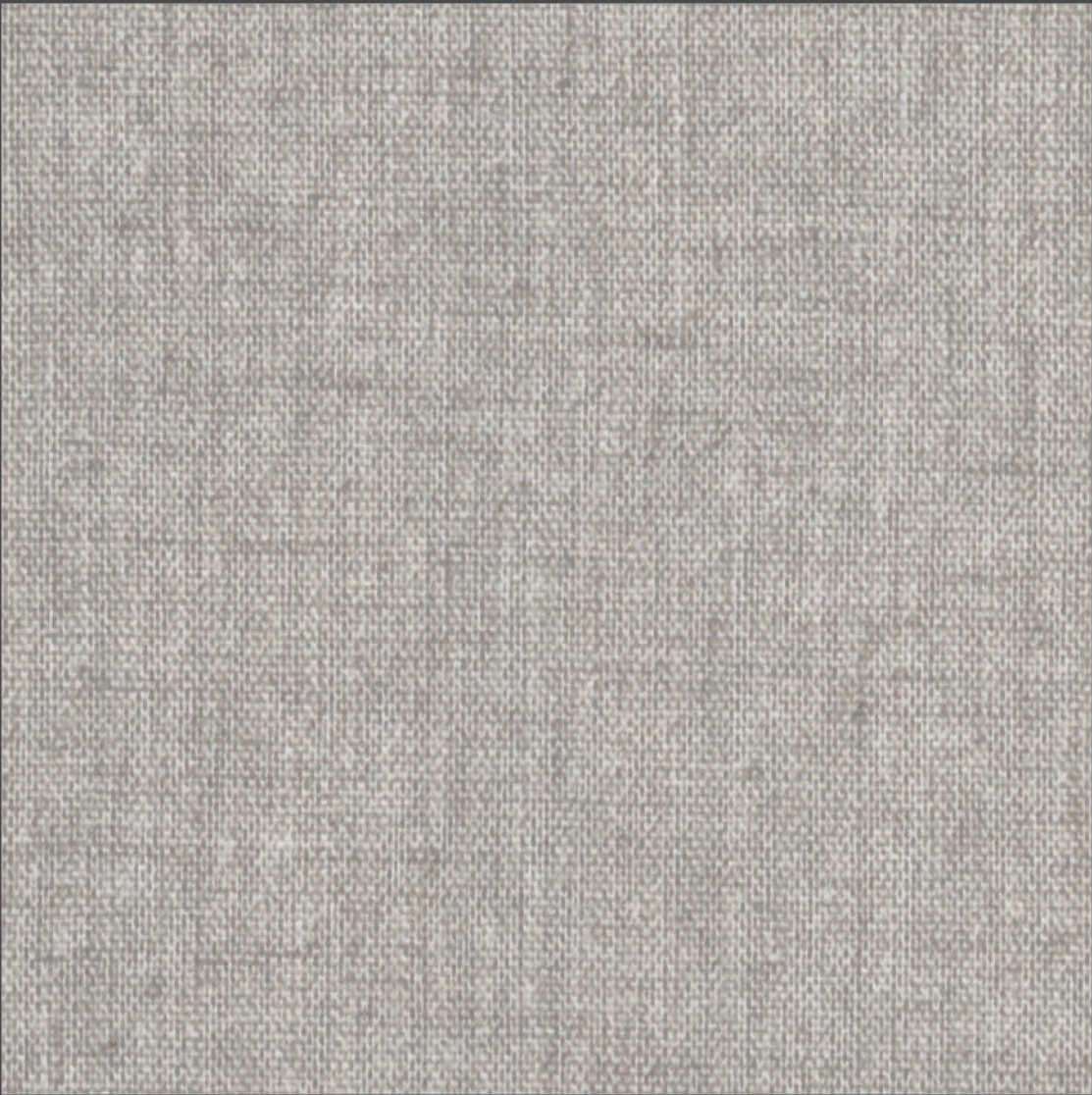


2401-SF

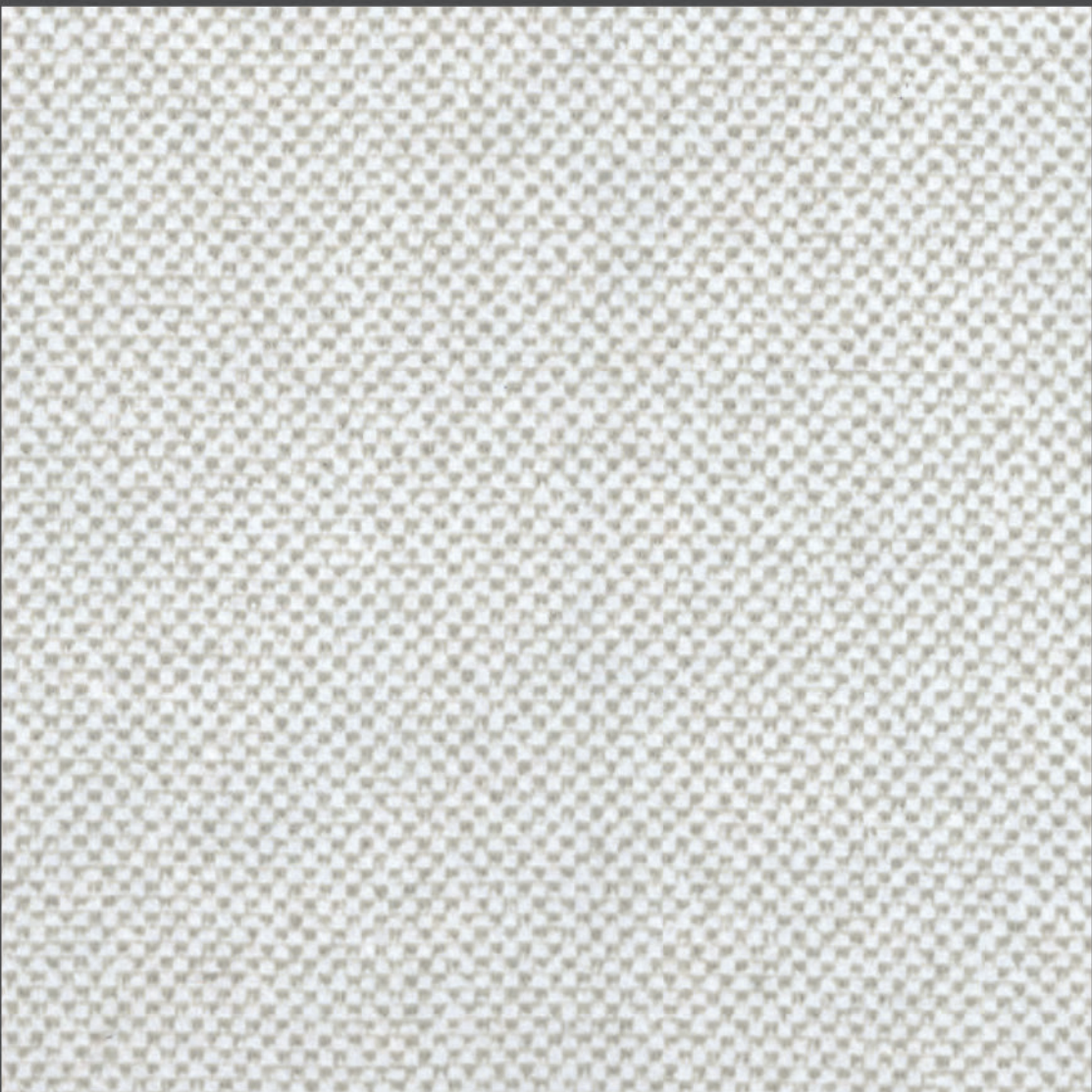
For the decor that call for a subtly opulent look, here are the designs to do justice. The checkered fabric look lends a graceful touch to the ambiance.

*Bring out
the fabric.*

FABRIC



2603-SF



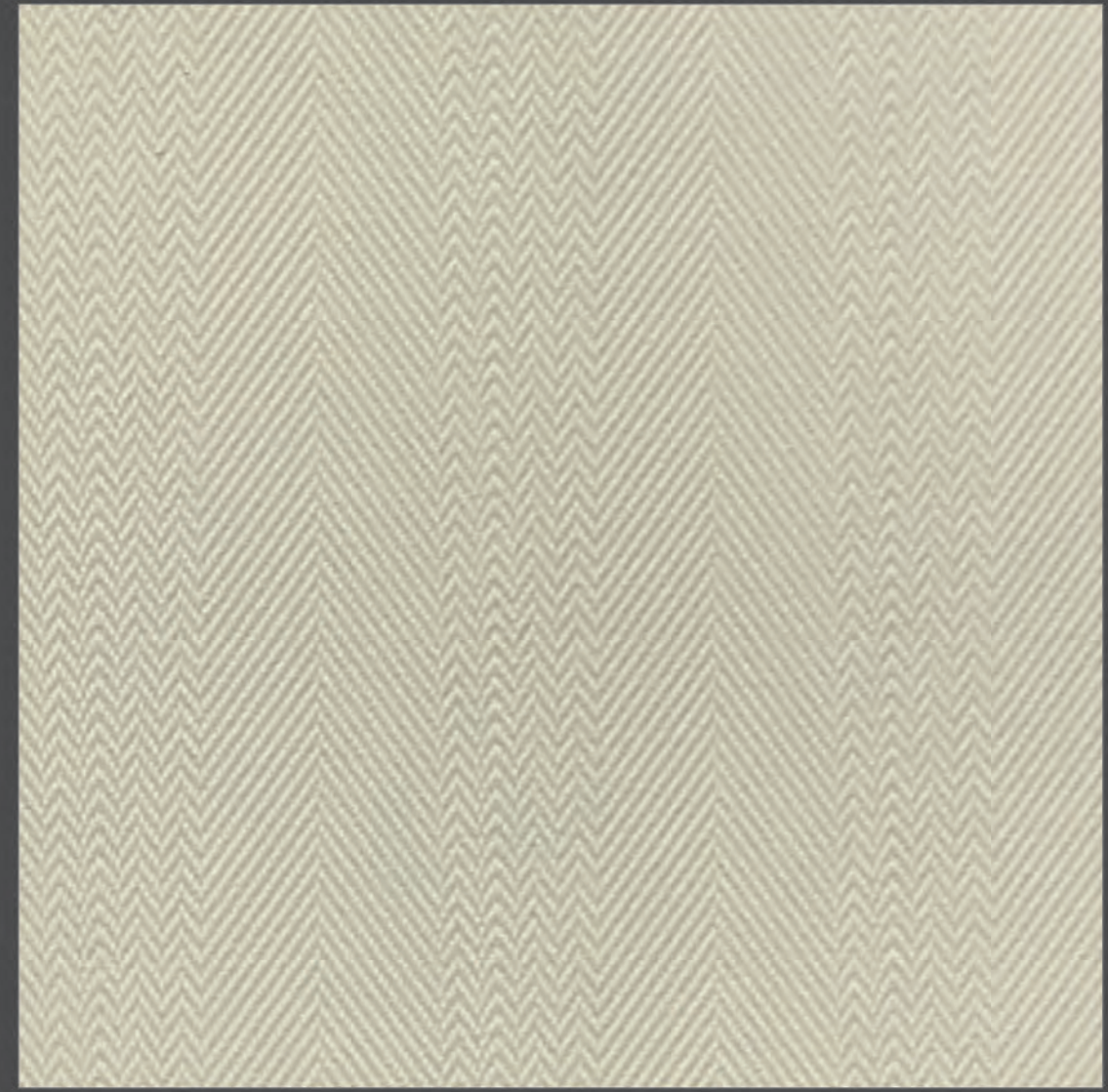
2611-SF

some trends never go out of fashion ... be it apparel or laminates. Inspired by the evergreen elegance of jute, here come the designs that never let you go wrong!



FABRIC

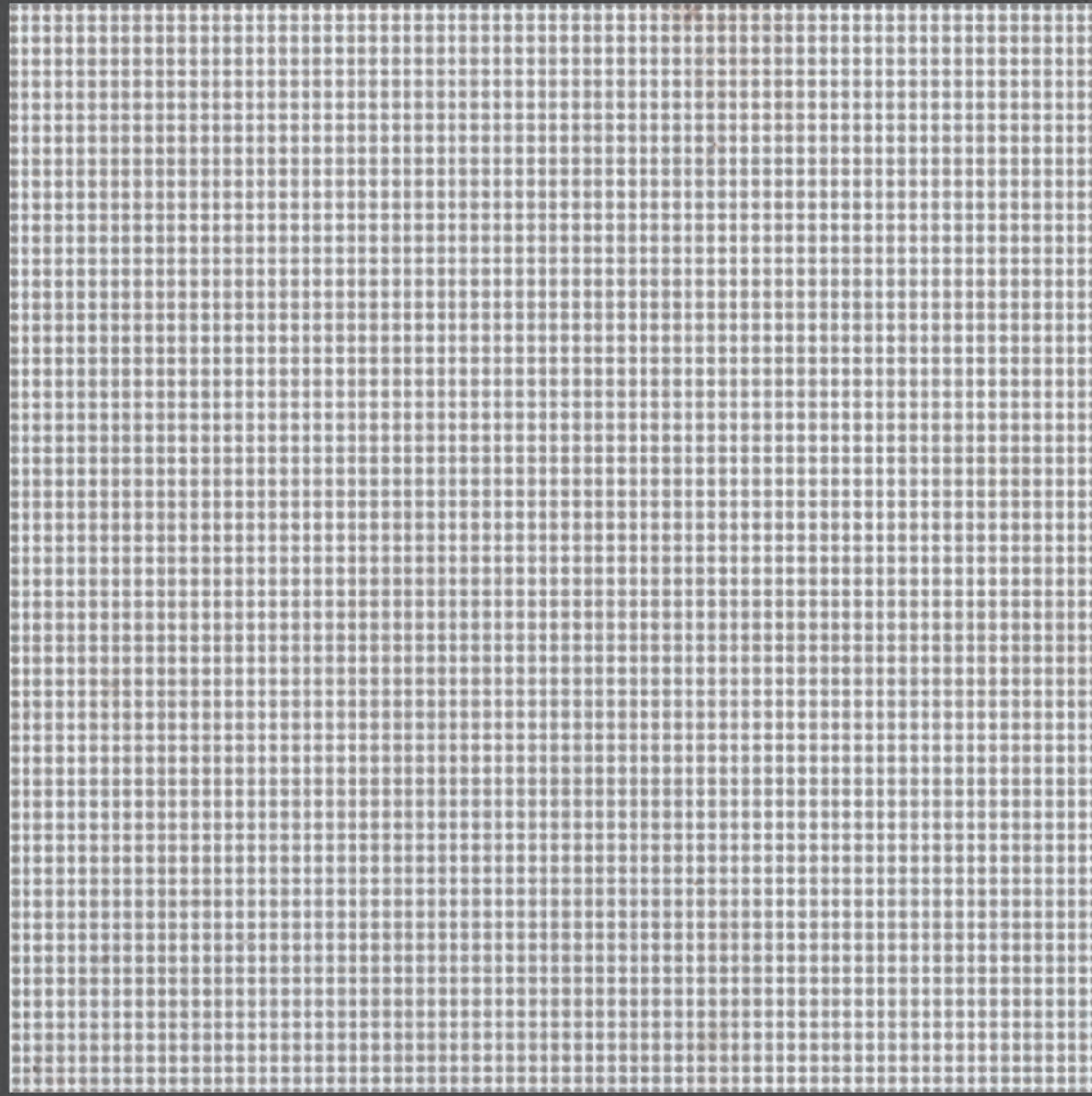
2206-SF



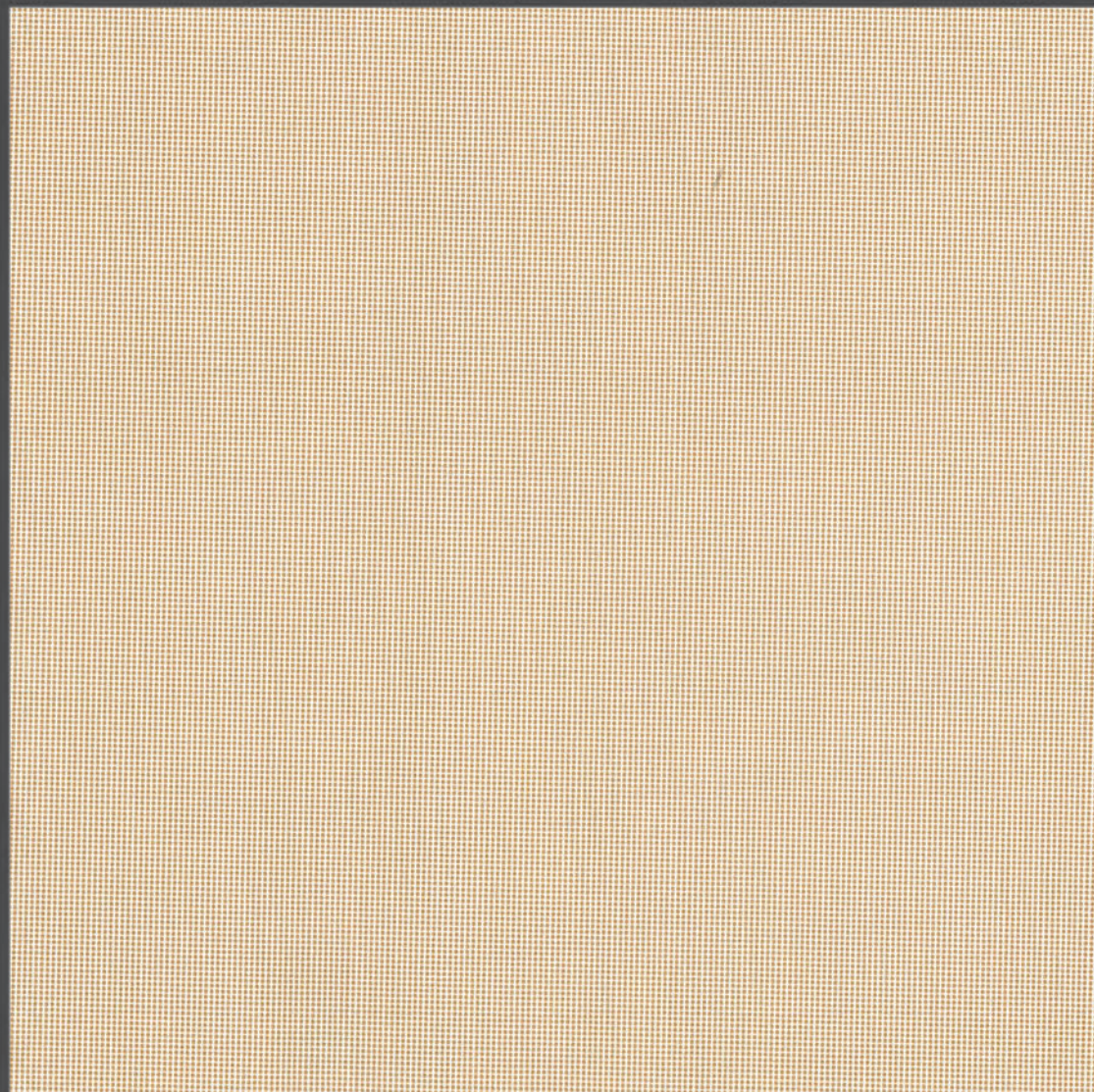
The rich ethos of enhancing entice that is sure to impress and express a fabulous form.

Fine selection for divine fabric

2216-SF



2217-SF





1101-TK | HIGH LINE PINE



1012-TK | STEAM BEACH



1016-TK | AFRICAN DARK

For your love to dress up and look your classiest best why leave the spaces behind? Dress them up with a collection where each design will up their style quotient.

*Behold the arrival
of elegant style*

Teak

The rich ethos of enhancing entice that is sure to impress and express a fabulous form.



1020-TK | BURMA TEAK



1021-TK | WILD WILLOW LITE



Teak



1022-TK | WILD WILLOW DARK



1024-TK | MANORWOOD LIGHT

*A space that
reflects your persona*

Inspired by the many shades and styles of the fabric, each design has been created to invoke the evergreen charm in your ambiance.





1026-TK | FOREST TEAK



1029-TK | ASIAN WALNUT



1027-TK | MANORWOOD DARK



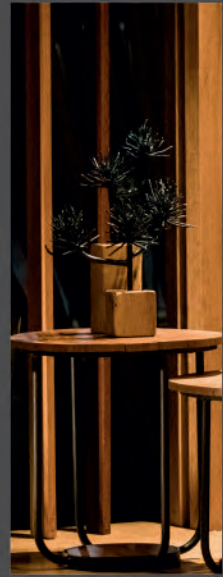
1030-TK | SAPELI

*Flaunt head
turning styles*

From The Classic to the not so classic this laminate all about taking wood risk.



1305-TK | NAINETEAQ



a world of patterns that create a quirky phenomenon of exceptional innovation.



1308-TK | ROSEWOOD

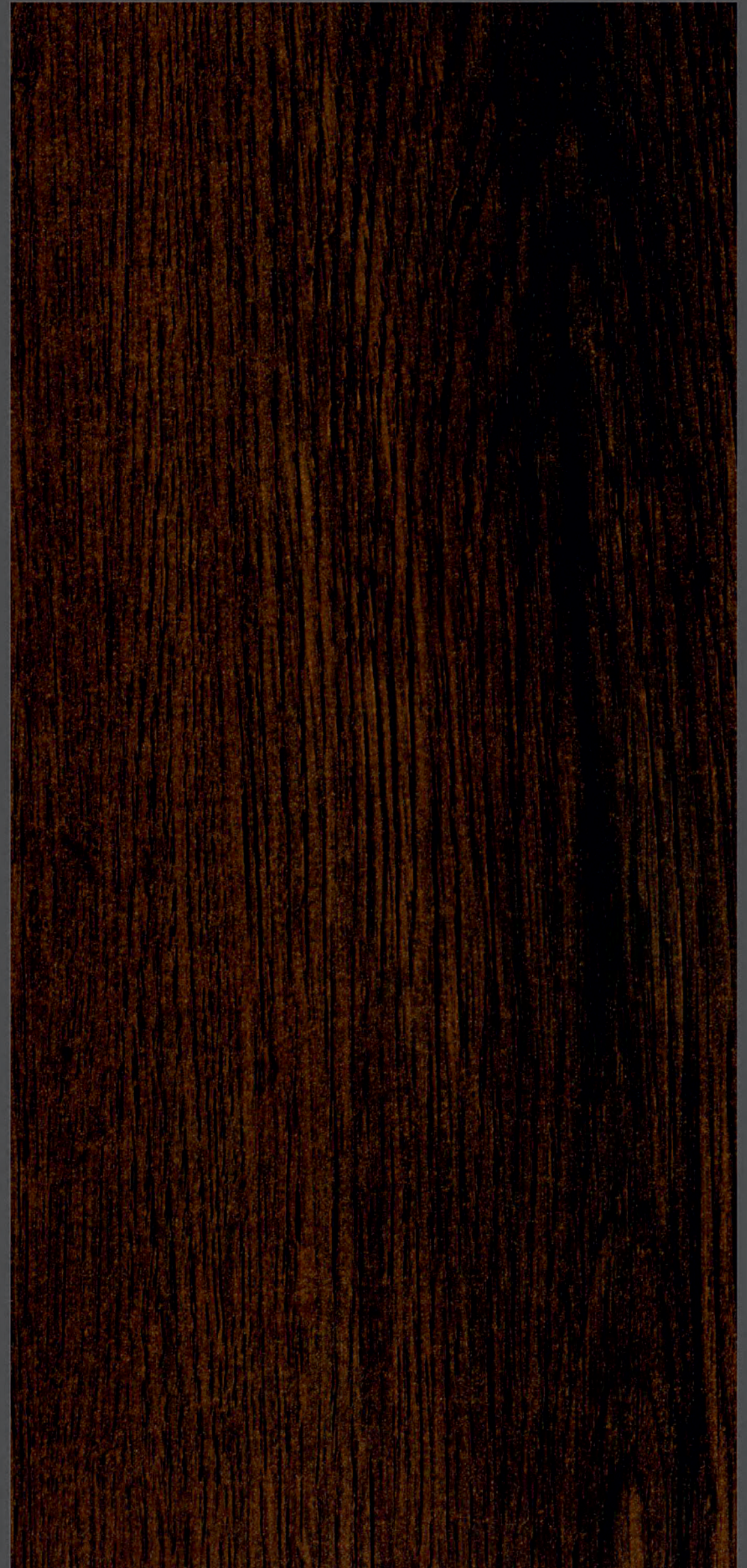
A sneak peek into a world of patterns that create a quirky phenomenon of exceptional innovations.

see beyond usual norms



*Induce feelings
of pleasure*

1109-TK
MOUNTAIN ELM

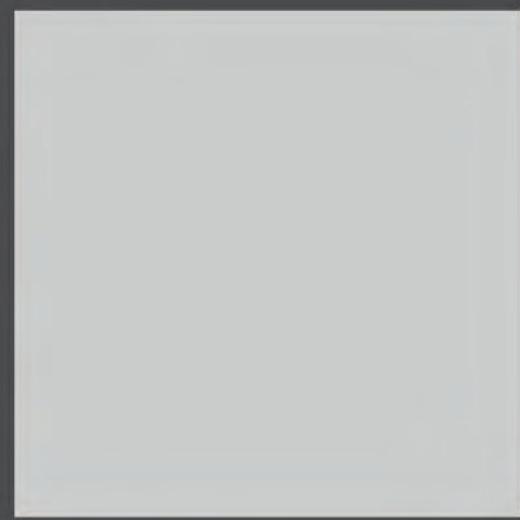


It's the idea to splurge with excitement and intensity, craving for a competitive edge that sets you apart, creating a special league.



Solid Colour

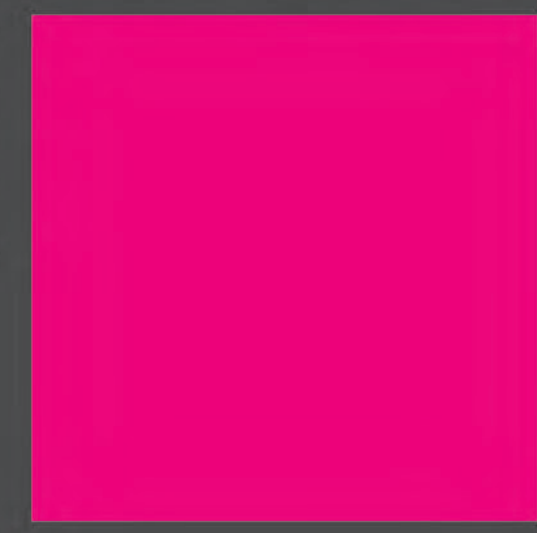
- HOME
- OFFICE
- MALLS
- 100% PHENOLIC



Light Grey



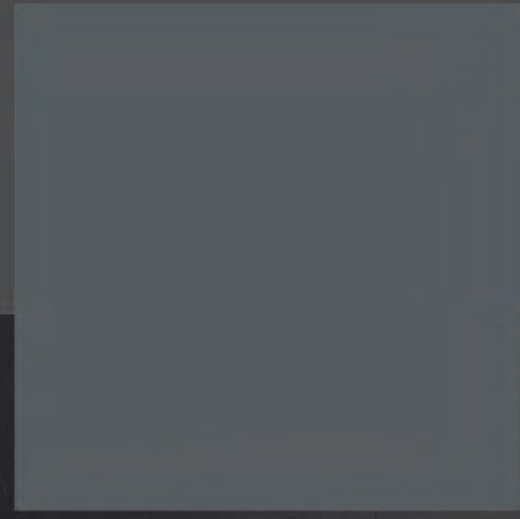
Ivory



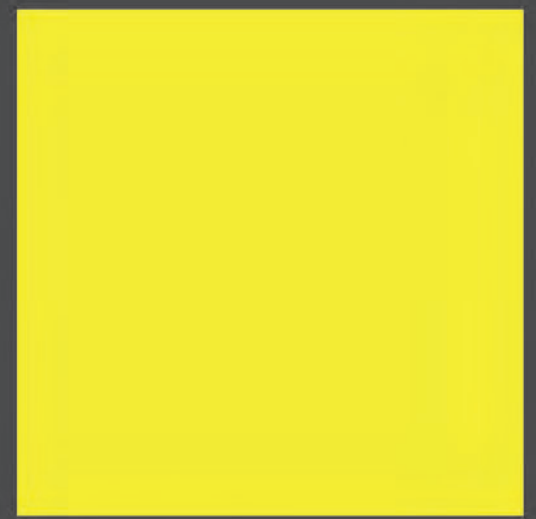
Pink



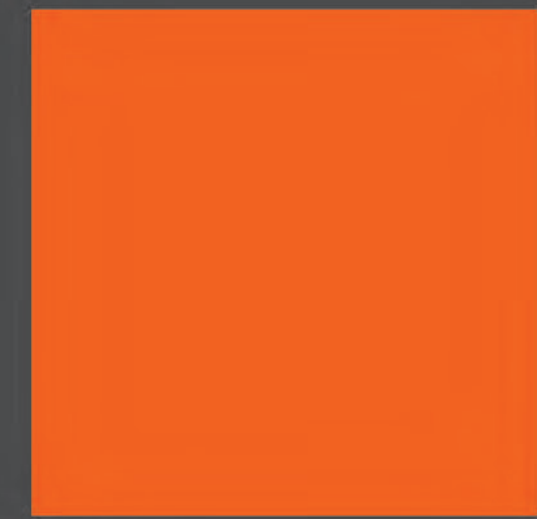
Electric Blue



Dark Grey



Lemon Yellow



Orange



Green



Black



Golden Yellow



Red

Bring brilliance into your decor

The rich ethos of enhancing entice that is sure to impress and express a fabulous form.

A sneak peek into a world of patterns that create a quirky phenomenon of exceptional innovations.



A space that reflects your persona

Create a moody and artistic fashion and lifestyle!
Follow this for best house renovation selection.



Size: 1220mm x 2440mm

Finishes: Suede, Matt, Glossy & Variable Texture.

Back Side Finish: Uniform Sanding gives guarantee for easy pasting.

Durability: The best technology provides high durability to our Laminates. Our Laminates are mended for life time.

Flexibility: A Specialty formulated phenol formaldehyde and melamine for formaldehyde resins with a special kind of plasticizer is used for better flexibility.

Note: Sample pasted here in represent only colour and finish, may not actual thickness. Please keep laminates away from direct sunlight.

Bonding of Laminate under high humidity, plywood with high moisture content, ply with uneven surface, inferior quality adhesive and insufficient pressure may lead to delamination / air bubbles in between ply and laminates.

The product must be inspected prior to installation and our liability will be limited to the extent of the cost of the product only.

Care & Maintenance: Wipe clean with ordinary soap or household liquid detergent. For stubborn stains, use diluted organic solvent or stain remover. Abrasive cleaners and wire brushes are not recommended.



Properties	Specified Values as per IS: 2046-1993 type S, VGS	Confirms
Resistance to surface wear	350 (Revolution)	>350 (Revolution)
Resistance to immersion in boiling water - Mass increase (%) - Thickness increase (%) - Appearance	10.0% (maximum) 11.8% (Maximum) Not worse than 4	5.0% Max. 6.5% Max.
Resistance to dry heat 180° C	Not worse than 4	
Dimensional Stability at deviated temperature - Longitudinal (%) - Transverse (%)	0.55% (Maximum) 1.025% (Maximum)	0.5% Max. 0.87% Max.
Dimensional Stability at 20° C - Longitudinal (%) - Transverse (%)	0.375% (Maximum) 0.60% (Maximum)	0.295% Max. 0.45% Max.
Resistance to impact by small diameter ball	20 N (Minimum)	25 N (Minimum)
Resistance to cracking	Not worse than 4	
Resistance to scratching	2.0 N (Minimum)	2.75 N (Minimum)
Resistance to staining	Not worse than 5	
Resistance to color change (Wool Standard) - In xenon arc light - In enclosed carbon arc light	Not worse than 5 Not worse than 5	
Resistance to cigarette burns	Not worse than 3	